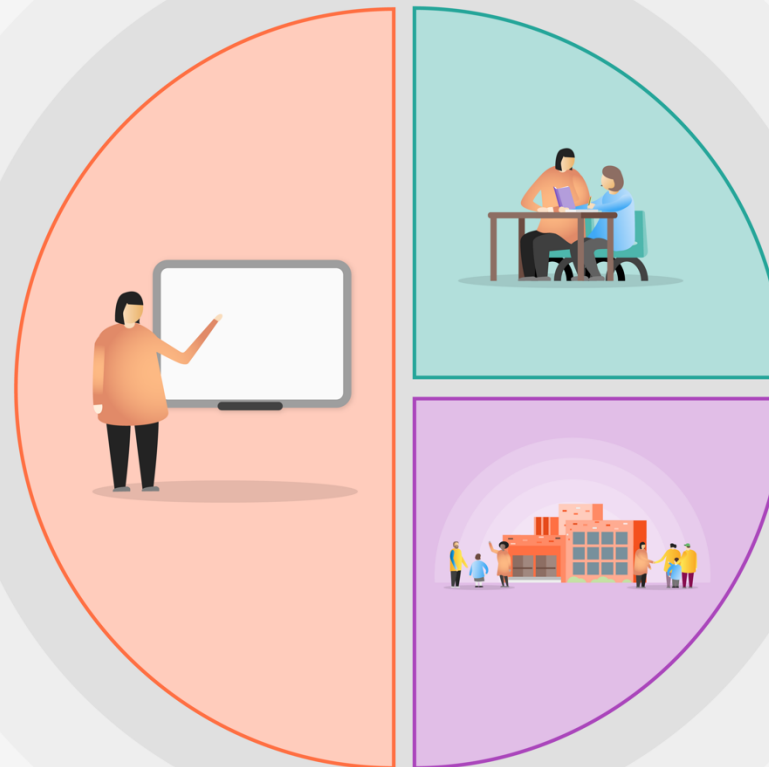


1 Teaching

- Refer to Recovery curriculum for all areas.
- Quality first teaching supported by evidence informed CPD for teachers and staff(ongoing through CMAT, The Key and EEF)
- Curriculum essentials for reading, writing and maths are identified and taught/revisited (remapped, nfer diagnostic)
- Effective formative assessment as a central part of T&L
- Focus on critical as we need to teach well-package of home learning(-TT Rockstars, WRH, Bug Club, Century)
- Home learning- focus on independent practice(quizzes, keywords provided-embed concepts into long term memory)
- Possible- weekly reading on video by each teacher- lock down



2 Targeted academic support

- Specific intervention programmes led by both Teachers and TAs
- (see SRSCMAT catch up funding)
- Literacy and numeracy interventions

3 Wider strategies

- Extensive outdoor learning provision- (refer to website for evidence-virtual tours)
- Teams utilised daily for learning and safeguarding- new training to follow