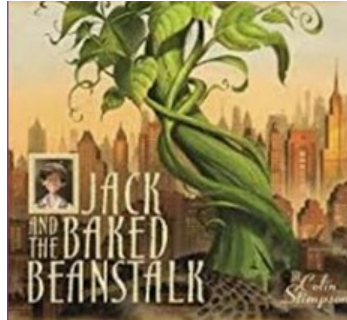
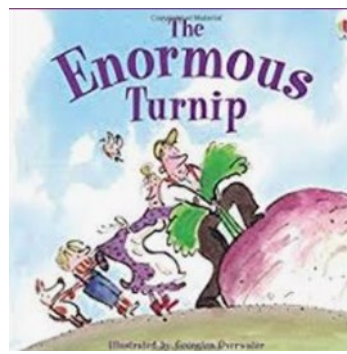


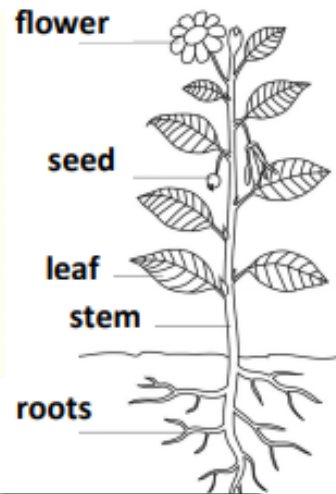
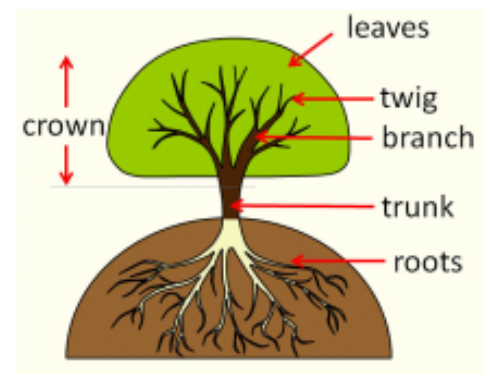
# Plants

- ❑ Know the names of a variety of common wild and garden plants
- ❑ Know the names of a variety of common trees
- ❑ Know which plants grow in the local environment
- ❑ Know the difference between deciduous and evergreen trees



## Key Vocabulary

<b>buds</b>	A bud is the part that grows up and holds the plant together.
<b>bulbs</b>	Bulbs store food for a plant and help it grow.
<b>deciduous</b>	Deciduous is the name given to trees that lose their leaves in autumn and are bare in the winter.
<b>evergreen</b>	Evergreen is the name of trees that have leaves all year round.
<b>trunk</b>	The trunk of a tree is the main part that grows from the ground to hold the tree sturdy.
<b>vegetable</b>	A vegetable is a plant or part of a plant which is used as food, for example cabbage or potato.
<b>wild plants</b>	These are plants that don't grow in our gardens and are self-seeded.
<b>environ-</b>	The area where a plant or tree lives is its environment.
<b>blossom</b>	Blossom is the flower that comes before the fruit. For example, apple blossom comes before the apple starts to grow.
<b>petals</b>	A petal is a part of the flower and is usually coloured. The colour and its scent attract insects.
<b>branches</b>	Branches come from the tree trunk and grow outwards.



Around 2000 different types of plants are used by humans to make food.

Some trees can live for thousands of years.

Bamboo can be a fast growing plant, some types can grow almost a metre in just one day!

Some plants are carnivores, a well known example of a carnivorous plant is the Venus Flytrap.

Water and nutrients travel up the tree trunk, through the branches and all the way out to the leaves.

As well as looking beautiful, trees help purify the air and provide food and shelter for all sorts of creatures.



deciduous



evergreen