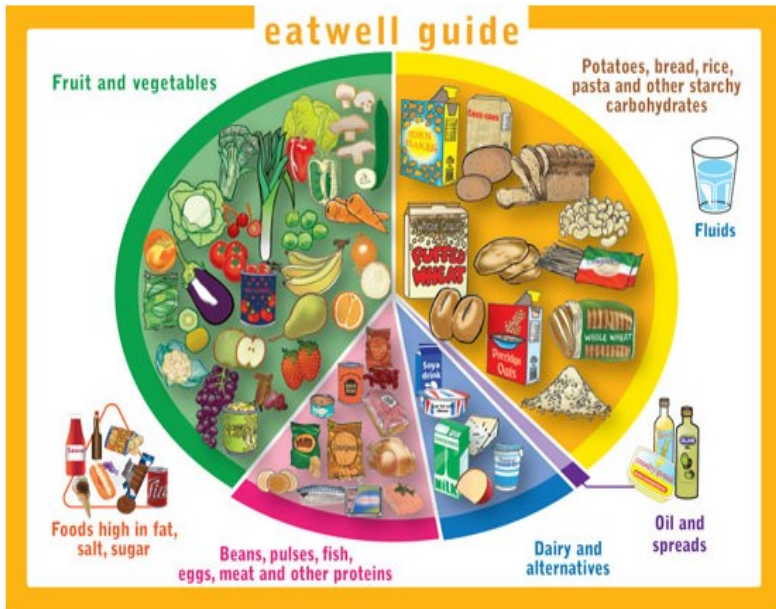
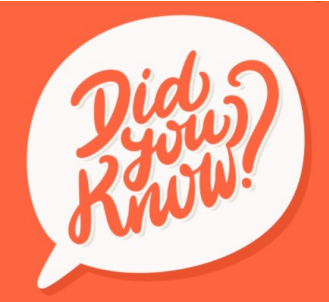


# Teeth, Eating and the Digestive System: Where does my food go?



## Investigate!

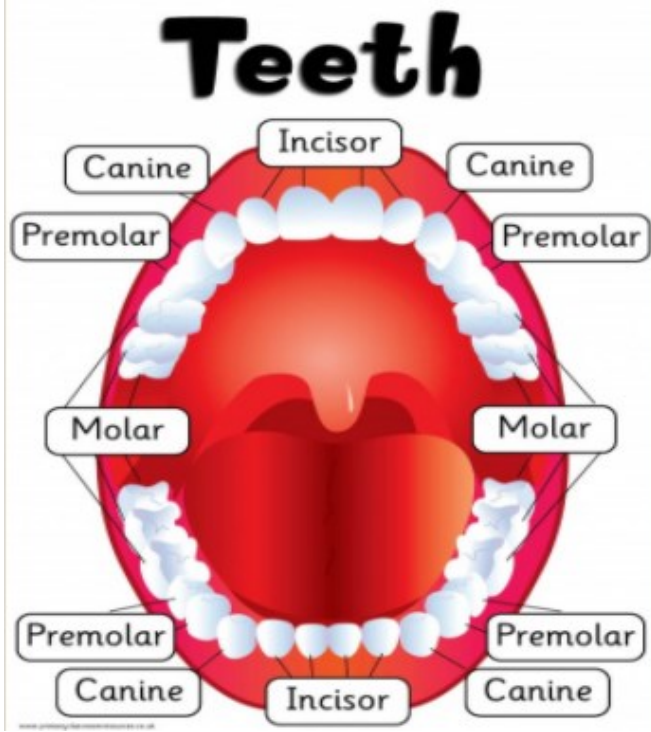
- Investigate the amount of sugar in drinks and learn how sugar leads to an increase in **plaque** and how this destroys tooth **enamel**.
- Compare the teeth of **carnivores**, **omnivores** and **herbivores**. What do you notice?
- Match animals to their teeth and explain your reasons for this.
- Identify the parts of the **digestive** system and explain their functions
- Create a presentation to show how our food is **digested**.



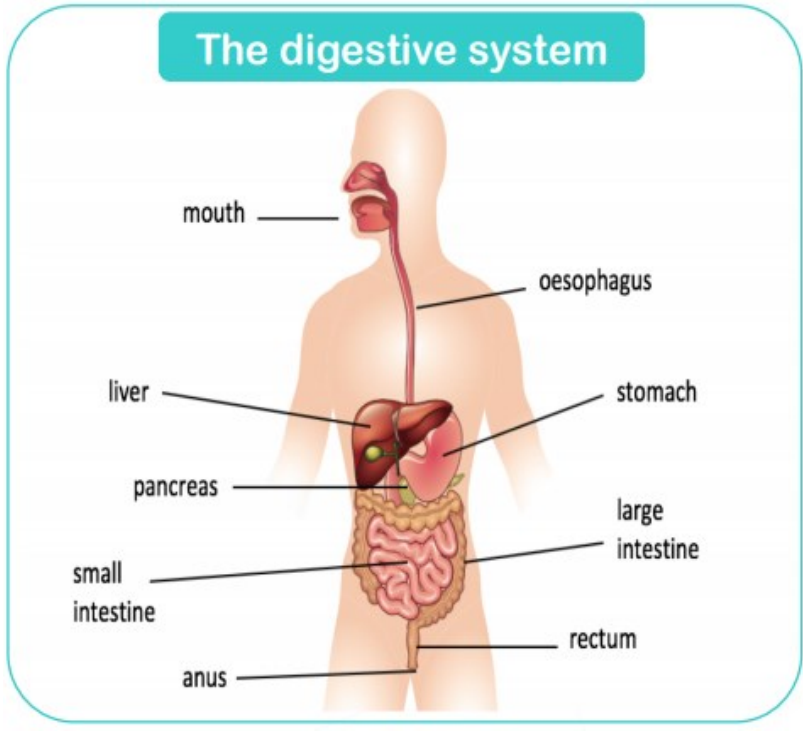
The small intestine is 6m long when stretched out!!!

The average adult human produces 160kg of poo in a year!

In the UK, 1.9 million tonnes of food is wasted each year.



Key Vocabulary	
<b>digest</b>	Break down food so it can be used by the body.
<b>oesophagus</b>	A muscular tube which moves food from the mouth to the stomach.
<b>stomach</b>	An organ in the digestive system where food is broken down with stomach acid and by being churned around.
<b>small intestine</b>	Part of the intestine where nutrients are absorbed into the body.
<b>large intestine</b>	Part of the intestine where water is absorbed from remaining waste food. Stools are formed in the large intestine.
<b>rectum</b>	Part of the digestive system where stools are stored before leaving the body through the anus.



1. Name the different food groups for a balanced diet

F\_\_\_\_\_ and \_\_\_\_\_  
 C\_\_\_\_\_   
 P\_\_\_\_\_   
 F\_\_   
 D\_\_\_\_\_

Start	End

2. Why do we have teeth?

To show them off when we smile  
 To bite our nails with  
 To bite, tear and crush food

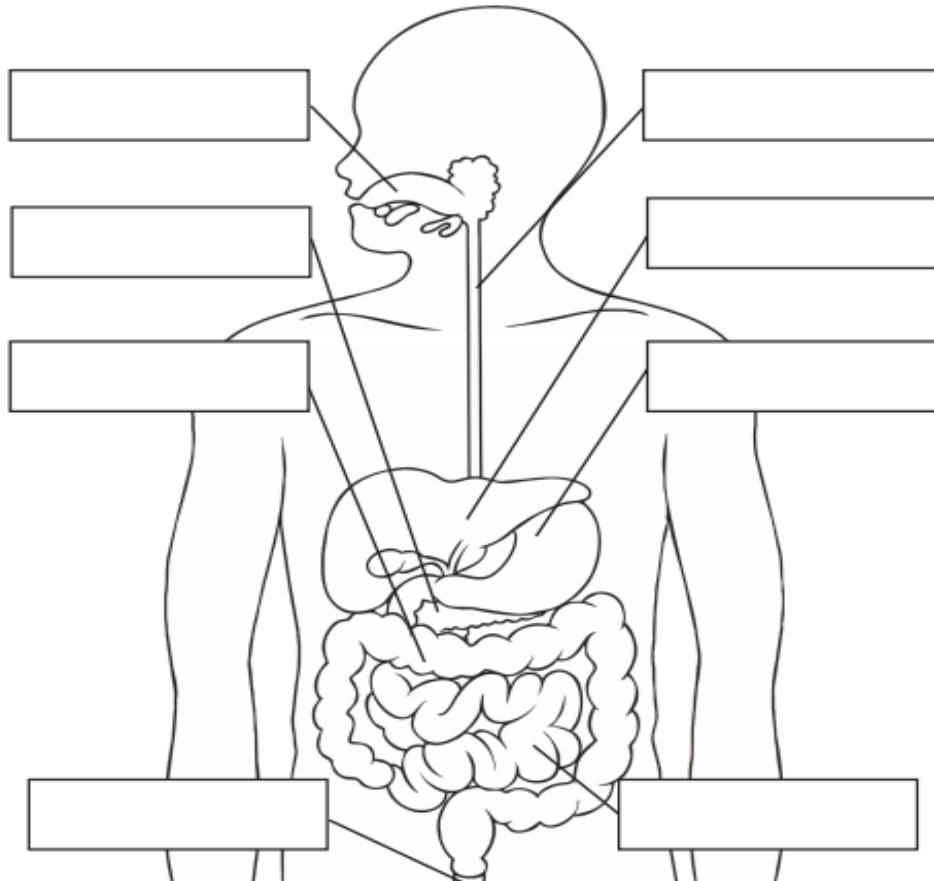
Start	End

3. What is the job of the different types of teeth?

Molars to tear food  
 Incisors to grind food  
 Canine to cut food

Start	End

4 Label the digestive system



5. Carnivores eat \_\_\_\_\_  
 Herbivores eat \_\_\_\_\_  
 Omnivores eat \_\_\_\_\_

Start	End

6. Match the parts of the digestive system to their role

Part of the digestive system
Saliva
Gall bladder
Liver
Duodenum
Oesophagus

Jobs
Releases bile into the duodenum when needed.
First part of the small intestine.
Helps chew, taste or swallow.
A muscular tube which forms the path from the mouth to the stomach.
Produces bile which helps to absorb fats.