



Prospectus 2021-2022



**St Ralph
Sherwin**
Catholic Multi Academy Trust

Contents

Page 3—Welcome

Page 4—School values

Page 5— School development plan

Page 6—A love of learning

Page 7—Sport, music and art at Saint Mary's

Page 8—Meet our teaching staff

Page 9—Parent and pupil voice

Page 10—Topics to inspire

Page 11—Early years

Page 12—Outdoor learning

Page 13—Mental wellbeing

Page 14—Special educational needs

Page 15—Our community

Page 16—Wraparound provision

Page 17—Important links

*All pupils, of any faith
or no faith, are very
welcome at our school*

*Please visit our school website at
www.saintmarysnewmills.co.uk for more information*

Welcome

Message from Mrs Chapman, Headteacher:

Dear Parents, Carers and Visitors,

I offer you a warm welcome to our school. We are a Catholic Primary school who has a strong focus on developing a culture of vocation. This is to encourage all of our children to do something wonderful with their life. 'Children are a dream found in God's heart and each one has a sacred purpose'.

We are confident that you will find our school a friendly and caring community where everyone is committed to providing the best possible learning opportunities for each child, a place where outstanding behaviour and respect for each other are highly valued. Every child is encouraged to reach their full potential by ensuring that each child is equipped with all the skills they need to continue on their future learning journey.



Saint Mary's is a small school that we like to think of as a family. We aim to give every child the best possible start to their school lives by catering to the needs of the individual child. We strive to create an environment where children feel safe, happy and valued and where every child can learn effectively.

We have very high standards of behaviour and this helps us to create an atmosphere where children are challenged, motivated and ready to take the first steps in becoming lifelong learners. We aim for children to be challenged appropriately to enable them to achieve their potential in academic, emotional, spiritual and physical development.

The children of Saint Mary's know that they are a source of great pride to all of the staff and families here at school and they respond to the high standards that we set for them in everything they do. We work in partnership with parents and carers and very much value the support and contribution they make to school life. The school also enjoys a close partnership with St Mary's Parish. Because home, school and parish work together, we are able to provide a happy, caring and effective learning environment, where expectations and standards are high. We have carefully designed our curriculum to develop thinking skills, creativity and spirituality, encouraging confidence and opportunities for children to be excited about learning and challenged to achieve their very best.



Ofsted said during their last visit in 2018:
"Pupils behave in an exemplary fashion. They are polite and welcoming to each other and to visitors."

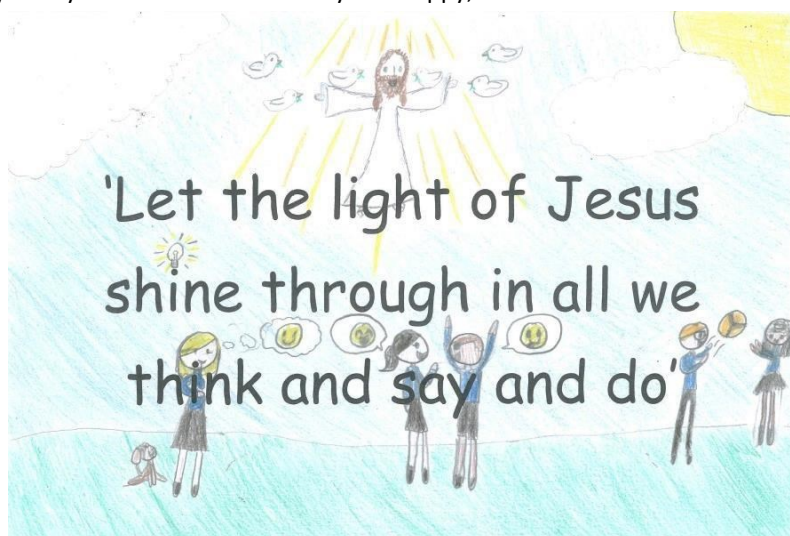
School values

Our school values are at the core of everything we do. They underpin our teaching and learning, and provide an environment which prepares our pupils as confident, happy citizens.

We devote our teaching and learning as a Catholic Community to the development of the individual child. We endeavour to provide an excellent learning environment by:

- The fostering and development of the Catholic faith within our community whereby we grow to respect our neighbours by the example of Jesus. We believe that: 'I'm important and precious because God loves me'.
- The setting of high expectations for all our pupils, thereby encouraging them to achieve their best, so that they can reach their full potential both academically and personally.
- The behaviour of our pupils which is outstanding and is achieved through a culture of mutual respect for all members of our school community and the wider world. Through teaching and learning, the children are given many opportunities to explore and understand the multi-cultural and multi-faith world in which we live.
- Enabling the children to recognise the value of their own talents and gifts.
- Promoting a love and passion for learning.
- Inspiring the children to embrace a healthy lifestyle in a school where they feel happy, safe and secure.

Year 6 pupils become ambassadors for our new pupils in reception. These pupils build strong relationships with each other which remain until the older pupils move to secondary school. Faith Friends and chaplains support the younger pupils through play, reading and the arts. During different times throughout the liturgical year they will help their understanding of bible stories and prayers.



Our Diocesan Canonical Inspection report in 2019 said: 'Pupils demonstrate the respect they hold for themselves and each other by their excellent behaviour around the school. Pupils say that they value and enjoy the 'special friends' system that operates where Year 6 pupils are paired with pupils new to the Early Years class. They value the responsibility and deep friendship bonds which are created through this.'



School development plan

Quality of education

- Ensure that pupils, particularly boys, learn the skills they need to write confidently at the level their starting points indicate they should (OFSTED)
- Quality of education - COVID-19 recovery curriculum, condensed curriculum in Maths implementation, mental health and well being of all adults and children
- Improve handwriting presentation, triangulation of English mapping with drivers and SPAG
- Triangulation of enrichment subjects with core and KS3, progression maps for Art/DT and Music
- Planned flashbacks on medium term plans
- Continue to improve arithmetic skills fluency, small steps
- Improve outdoor provision in EYFS linking to 17 early learning goals

'Whatever you do, work at it with all your heart'

Colossians (3:23)

Leadership and Management

- To strengthen the role of subject leaders so that they are equipped to monitor and evaluate the intent and breadth of their curriculum area
- Develop Distributed Leadership
- Refine the information the school collects about the pupils progress so that leaders can get an accurate picture of the impact of the quality of teaching.

'Jesus looked at them and said "With man this is impossible, but not with God; all things are possible with God."

Mark (10:27)

Personal development

- Roll out of knowledge mats for RE linking to PSHE/RSE guidelines
- Review the Mission Statement
- Charity focus - 'Serving Our Community, growing in faith together' - linking to the beatitudes
- Revisit RSE policy

'I can do all this through him who gives me strength.'

(Philippians 4:13)

A love of learning

We aim to foster a love of learning in our children and for every child to have the opportunity to work to the best of their ability. We strive for excellence in all that we do and children make excellent progress at Saint Mary's. This is partly down to the outstanding efforts of the teachers and staff to challenge and support every individual child. But just as important is the partnership that we form with parents and families to build a love of learning and a desire to achieve. As a small school, we are able to have close relationships with every family, which has a hugely positive impact on our children—parents, grandparents, and extended family all become part of the Saint Mary's family around the child.



The building of a child's self-esteem is integral to the school's vision to ensure that personal confidence and self-belief are both maintained and developed, and to ensure that every child has the confidence and skills to make good decisions and become confident, independent, lifelong learners.

Key Data (Key stage 2)

- Attainment is high in all subjects. Above FFT National Attainment 2020
- Reading 94%/ 59%
- Maths 82%/41%
- This is a consistent position for the school over recent years
- Children perform well at Greater Depth



Ofsted said during their last visit in 2018:

“Pupils learn in a calm, well-organised and stimulating environment. Every available space is used to promote learning.”

Sport at Saint Mary's

Physical fitness and the associated benefits of social and emotional wellbeing is as important to us at St Mary's as academic achievement. Our vision for PE at St Mary's is to provide children with the tools they need to achieve and understand their full physical, cognitive and social/emotional potential, leading them on a journey towards a lifelong positive attitude for sport, physical activity, health, fitness and wellbeing.

Our school values are embedded in every part of our planned PE curriculum and play a key role in the development of our pupils to achieve their full potential in PE, School Sport and Physical Activity.

Using a broad range of sporting contexts, we provide an engaging and varied PE schedule that progressively covers the requirements of the National Curriculum.

There are plenty of opportunities in our school for children to be physically active every day. These include extracurricular clubs, active learning in lessons, our own forest school, regular class/whole school wellbeing walks and daily running sessions before school.

St Mary's pupils participate in many inter and intra school competitions and festivals where all of our pupils have opportunities to participate in a wide range of age appropriate sporting fixtures in the High Peak.



Music at Saint Mary's

The definition of music is "an art of sound in time that expresses ideas and emotions in significant forms through the elements of rhythm, melody, harmony and colour".

Here at St Mary's we endeavour to bring together all of these elements through individual and group singing, exploring various musical forms, body percussion, composition, instrumental performance (tuned and untuned instruments), listening to and gaining appreciation of both live and recorded music. Through quality music education, pupils will develop a love of music as well as increase their self confidence, creativity and sense of achievement.

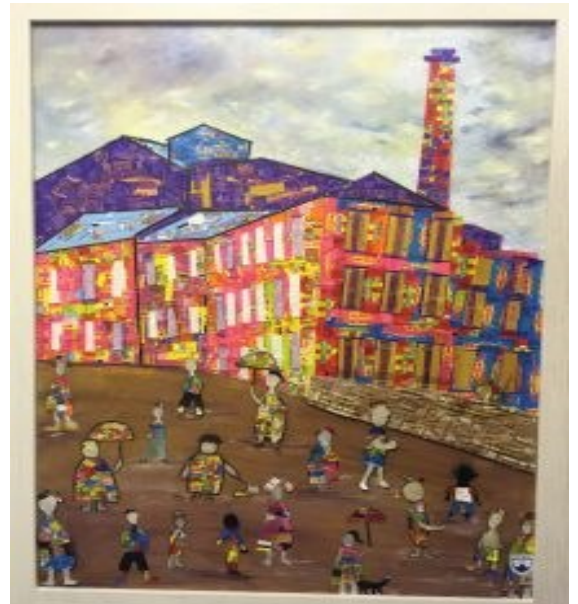


Art at Saint Mary's

Our Art and Design curriculum develops creativity, sets challenges, engages and inspires children and equips them with the knowledge and skills to experiment, invent and create their own works of art, craft and design.

Children will also develop their knowledge of famous artists, designers and craft makers from the local area and around the world.

We regularly hold exhibitions of children's artwork and participate in the National Gallery's 'Take One Picture' project. We are currently working on a collaborative art project within the St Ralph Sherwin Multi Academy Trust, called 'Stronger Together.'

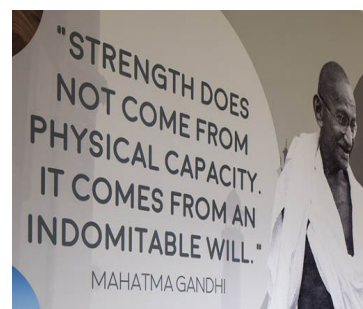


Meet our teaching staff



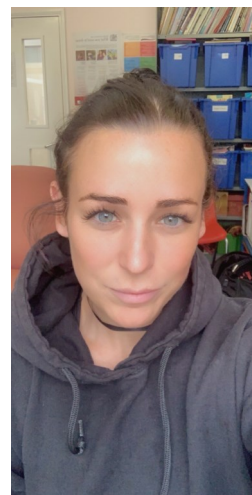
Mrs Chapman — Headteacher, Class two teacher, designated safeguarding lead and Level 3 Forest Schools Practitioner. I am from Co. Armagh in Northern Ireland.

I have worked in Catholic Primary schools for 19 years starting as a Teaching assistant, Higher Level Teaching assistant and then a class teacher, Acting Deputy Head of School and this year Headteacher. I am passionate about outdoor learning and the benefits it has for well being. My favourite inspirational leader is Gandhi.



Mrs Dodd—Class one teacher (reception and half of year one)

I was originally born in Newcastle in the North East of England. I met my husband there and it was only when he came to leave the army that we decided to plant our roots locally where he was born. I have been teaching for 9 years now having previously worked in law. You don't just join a school like St Mary's, you become a part of it and I have never felt such a sense of community and family spirit in a work setting before.



Mrs Mallabar—Class two teacher (half of year one and year two)

Maths Mastery Specialist and Mental Health Ambassador

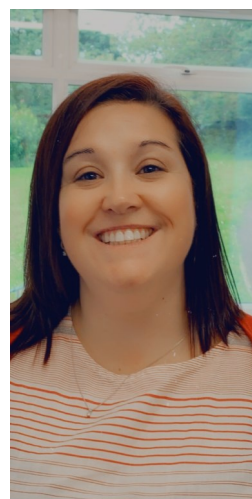
I have worked in Catholic Primary schools for the last 13 years and was lucky enough to join the St. Mary's family in 2015. I adore working at St. Mary's and feel privileged to work in such an amazing team. Providing an environment that is fun, engaging and supportive of children's mental health and well-being is key to everything I do.

I am a mummy of three, wife to Mark and I find joy in the simple things in life... wet welly walks with my children, curling up with a great book and belly laughing till my sides hurt with my friends.



Mrs Brassington—Class three teacher (year three and four), SENCO and Deputy Safeguarding Lead

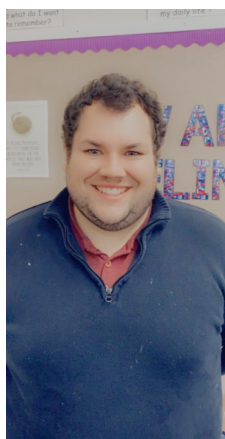
I have been a teacher at St Mary's for 20 years. I enjoy art, photography and swimming. My family are my driving force in everything I do.



Mr Pearson—Class four teacher

I have been a teacher at Saint Mary's for two years. Before I trained to be a teacher, I was a teaching assistant at a primary school in Glossop for 6 years. Saint Mary's is an amazing school with supportive staff and parents. I am lucky to teach so many wonderful children and I feel confident that they leave our school as ambassadors and role models: growing into mature young adults.

Apart from teaching, I love playing rugby for my local club, Glossop RUFC and I enjoy supporting my favourite football team—Manchester United. Somebody has to!



Parent and pupil voice

Some of the strongest and most important ideas about our school have come from the pupils themselves. For this reason, it is very important that the pupil's voices are heard and allowed to influence many aspects of school life. At Saint Mary's we have a pupil council, made up of pupils from every year group including reception and Year 6 pupils, which meets every month. Pupils in all year groups either lead or help to lead weekly worship within school (please see weekly worships in our video resource on the school website). Strong friendships are developed through various child led groups including chaplaincy, reading groups and weekly worships. This promotes a sense of responsibility and community within school. Older pupils consistently promote positive behaviours and are excellent role models in supporting younger children in their educational journey within school.

Messages from our parents:

"Firstly, many congratulations to you Mrs Chapman on the appointment as Head of St. Mary's Catholic School. I am delighted my boys and the rest of the school have such a wonderful role model to lead St Mary's. I feel you have the vision, passion and commitment to make a fabulous head teacher and I wish you every success in this new role."

"Dear Mrs Dodd,

Happy World Teacher's Day! Thank you for everything you do! Henry enjoys school immensely and this is because you, Mrs Butler and Mrs Shaw make it such a warm, fun and educational place to be! We're so pleased with Henry's progress this year, especially his reading! And as ever, he still very much enjoys his numbers! Thank you for all of your hard work, dedication and care during such an unprecedented time!"

The pupils of Saint Mary's make us proud every day.

We understand and value the crucial role played by parents as an integral part of their child's education as well as being a vital part of our school community. Parent's involvement in the life and work of the school for their child's education cannot be underestimated- this is one of the crucial elements of the success of Saint Mary's. A true understanding of every child cannot happen without a solid, warm and understanding relationship between school and home.

We communicate with parents in several ways. School will send out a weekly newsletter by e-mail every Friday with highlights from the past week and upcoming events included. We also use 'TheSchoolApp', through our website, for short messages to keep everyone in the loop, e.g. don't forget the cake sale tomorrow, please bring old clothes for forest schools on Tuesday etc. Our school website is a fantastic resource to find just about anything to do with school life, from policies and governance information to a downloadable and syncable school calendar and school dinner menu's. We have a school noticeboard outside the office where we will post copies of newsletters etc. and all newsletters and letters to parents are uploaded to our school website.

Full school reports are sent towards the end of the summer term and we host two Parents/teacher evenings per year.

We also host regular parent workshops in the evenings on important topics such as mental wellbeing, the teaching of maths, phonics and 'getting ready for SAT's.

The PTA

St Mary's PTA is an open community of volunteers, who work in conjunction with Mrs Chapman and all of her staff, to benefit the school and to ensure the best educational experience for all pupils. The PTA's main objective is to raise monies through activities and events to assist the funding of school initiatives. In the last twelve months alone, St Mary's PTA have provided financial support for a variety of different projects - from trips to the local pantomime to the purchase of outdoor play equipment, from new library books to chicken coops !

Parents and carers are automatic members of the PTA, meaning effectively it is everybody's association. The over-riding aim is for the children to proudly say that they spend -

Six
Cool
Hours
Of
Our
Lives at St. Mary's.

*We promise to walk side by side
with families on their child's edu-
cational journey. We are on your
side, through every triumph and
every challenge. We will support
you.*

Mrs. Chapman



Topics to inspire

From reception onwards, we offer a broad, balanced and creative curriculum that connects subjects in a way that reflects real life, enabling students to gain an understanding of how, and why, their learning is relevant to them. A great emphasis is placed on the development of literacy, numeracy, scientific and ICT skills.

Our curriculum is ambitious, it gives our children experiences to enrich their learning and focuses on progressive knowledge and skills. We aim to provide children with the ability to develop the personal characteristics and skills to succeed in life.

Our curriculum is based on driver subjects encompassing History, Geography and Science. Children will be engaged in driver topics such as Ancient Greece, Toys, Egyptians, Plants and Victorians. Children are given the chance to fully immerse themselves into the topic with curriculum enrichments given both in school, for example our birds of prey day, and outside of school through field trips and local walks. In class 4 the children had the opportunity to visit the Galleries of Justice after learning about Crime and Punishment through History and in KS1 trips included visits to Manchester airport, the aquarium and train rides into Manchester from New Mills.

We have collapsed curriculum days throughout the year where the whole school engage in the topic. For example, when all classes are taking part in a history topic we have a 'Time travel' day where everyone dresses up in the era they are learning about and take part in activities based on their topic.

Rocket recaps are encouraged in all classes where short quizzes are built in throughout the day to encourage flash backs to previously taught subjects. This develops children's metacognition and understanding of what they have learned and the impact this has on future learning.

The fundamental principles behind the design of our curriculum are for our children to:

- * Be confident, independent, resilient people with a love for learning
- * Be kind, empathetic, respectful and forgiving—these are key elements of our Catholic faith
- * Value diversity and celebrate individuality in all, appreciate other peoples views, values, strengths and challenges
- * Achieve academically to the best of their ability

Education is the most powerful weapon which you can use to change the world.

Nelson Mandela



Early years

The first five years of life are the most significant years your child will have, as in this period children learn faster than at any other time. The kind of experiences a child has will help to shape the future person they will become.

Play is the
highest form
of research

Albert Einstein



In EYFS, we plan, deliver and assess around the seven areas of learning and development.

Prime areas: Personal, Social and Emotional Development, Physical Development, Communication and Language

Specific areas: Literacy, Mathematics, Understanding the World, Expressive Arts and Design

Often these areas overlap and are not taught in isolation. All of the areas are delivered through planned, purposeful play, with a balance of adult-led and child-initiated activities, which take place indoors and outdoors.



Outdoor learning

Outdoor learning is an essential part of our school and each class have their own designated area.

We also have an onsite forest school which each class accesses throughout the week.



Learning outdoors provides a holistic approach to teaching and ensures children learn from real life experiences/problems as well as how to be safe in their local environment. Children are also exposed to life long skills such as how to start a fire safely.



We have recently bought a chicken coop situated in our forest school. Each class have their own hen and took part in a competition to name their hen. Children are given the opportunity to look after the hens by feeding them and cleaning their outdoor area. This gives them the opportunity to develop emotions such as empathy and a caring, sensitive nature. This links to our Catholic beliefs of caring for all of God's creatures.



Mental Well-being

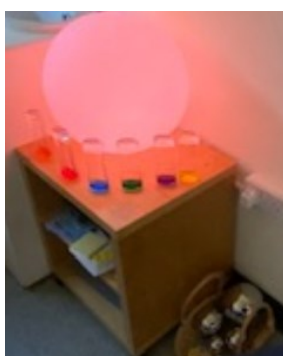
Message from Mrs Mallabar, our trained Mental Health First Aider and Mental Health & Well-being Ambassador

At St. Mary's Primary, the mental health and well-being of our pupils and staff is a key priority. It is not something that is celebrated on a particular day, but instead is embedded in everything we do. Our curriculum has timetabled weekly well-being activities that are guided by the pupils. These range from Mindfulness activities, Yoga, Well-being walks and even toasting marshmallows in our Forest School. We have rich outdoor learning environments where the children have the ability to explore their learning in the fresh air, varying weather and of course, being close to nature.

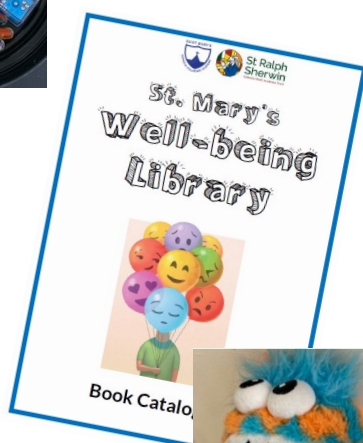
Our staff are supported by 'Wilma the Well-BEAN' - a little mascot who keeps an eye out on everyone, celebrated the wonderful achievements of our staff and even provides the occasional treat when the going gets tough! We recognise that happy teachers mean happy classrooms.



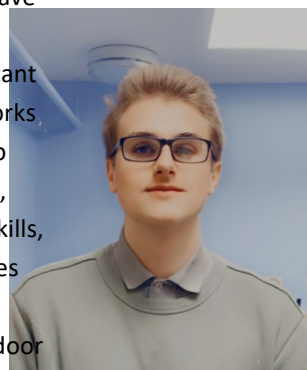
We have a 'Nurture Room' to help support the emotional development of our children. The room is a safe, calm space with soft bean-bags, ambient coloured lighting and different toys and objects for the children to explore during their Support Sessions.



We have recently established a Well-being Library. This library has a selection of children's books that address possible topics that children will encounter in their own lives. These books can be borrowed and taken home to read and share with their parents, prompting conversations that support their well-being and emotional development.



We are very lucky to have a dedicated Emotional Literacy Support Assistant in school. Mr Stone works closely with children to develop their personal, social and emotional skills, using a variety of spaces like our nurture room, Forest School and outdoor areas.



Our school chickens give the children the opportunity to learn about taking care of animals and having an appreciation of all creatures on God's earth. Each class has their own chicken and have timetabled time to visit, feed and care for the chickens. The staff also share responsibility for caring for the chickens during weekends and holidays—they really are part of the family.

Forest schools sessions help to develop emotional resilience and self esteem. Here pupils are taught using, 'Tool Talks' on how to use a bow saw safely.

Special educational needs

It is our vision to create a happy and stimulating learning environment in which all members of the school community can grow in self-esteem and develop to their full potential as individuals in a diverse society.

At St Mary's we value the abilities and achievements of all our pupils, and we are committed to providing, for each pupil, a broad and balanced curriculum to enable them to make the best possible progress. Children who may have special educational needs are identified as early as possible, monitored and given individual consideration and attention. All teachers in our school are teachers of all children, including those with SEND. Inclusion is at the heart of our school ethos.

All our children are treated as individuals and the class teacher, alongside other support staff, plan an appropriate differentiated curriculum for those with additional needs to ensure high quality teaching and learning with effective support and resources. We are committed to working closely with families and appropriate outside agencies to ensure that we best meet the needs of children.

Our School SENCO is Mrs Brassington, who has achieved the National Award for Special Educational Needs Co-ordinator.



Ofsted said during their last visit in 2018:

"Many pupils said that they felt lucky to be a pupil at St Mary's."

Our community

We take enormous pride in our school community and the mutual support benefits everyone. It is important that we instil a sense of responsibility in the children to this wonderful community that we are a part of.

Saint Mary's Church is virtually next door to school and we hold regular class Masses and whole school Masses there. Our children and families contribute to the life of the parish and the celebration of Mass through altar serving, scripture reading and singing. We have a Liturgy session for children every Sunday led by our chair of governors, Mrs Jo Barber. The parish in turn enriches our school with regular visits from the parish priest who also serves on the governing body of the school. We also have wonderful support from the parishioners, who regularly join us for services led by the children in school.



At Christmas, our school choir entertains a local residential home by singing carols. This is an incredibly important part of our celebration of Christmas and something the children look forward to every year.



Every year, the children choose charities to support that are important to them and they devise ways to raise money, including cake sales, sponsored sports events and reading challenges. We are incredibly proud of the giving nature of our pupils who understand how they can positively impact those less fortunate than ourselves.

Every year, a pupil is awarded the 'kind hands' award for their services to the community.



Saint Mary's wraparound clubs!



Breakfast club runs from 7.30am to the beginning of school and includes cereal, toast and a drink.

We do lots of fun games, Lego and art activities too!

£3.00 per day.

After school club runs from home time to 5.30pm. We play sports, do enrichment activities, have homework club and play games together as well as do lots of art and craft activities. We also have a snack, such as a ham and cheese wrap, fruit, a biscuit and a drink!

£7.50 per day.

You can book in advance via ParentPay for as many or as few days as you need.

You can use your tax-free childcare vouchers to pay for both breakfast club and afterschool club — just speak to the school office for more information.

Important links

Our website: www.saintmarysnewmills.co.uk

Performance data: saintmarysnewmills.co.uk/performance-data/

Ofsted report: www.saintmarysnewmills.co.uk/inspections-1/

Pupil premium report: www.saintmarysnewmills.co.uk/pupil-premium/

Sports premium report:
www.saintmarysnewmills.co.uk/pe-and-sport-premium/

Saint Mary's Catholic Voluntary Academy

Longlands Road

New Mills

High Peak

Derbyshire

SK22 3BL

01663 742412

joxley@nmm.srscmat.co.uk

Headteacher—Mrs P Chapman

SENCO—Mrs K Brassington

Safeguarding lead—Mrs P Chapman

To have a look around school, please call Mrs Oxley at the school office on 01663 742412 and we will arrange a mutually convenient time. We would love to see you!



***All pupils, of any faith
or no faith, are very
welcome at our school***