



**2ND FEBRUARY 2024**

# **FRIDAY NEWSLETTER**

## **SAINT MARY'S CATHOLIC VOLUNTARY ACADEMY**

Welcome to our newsletter.

The focus this week is PE which also links to our focus on active children. We posted lots of videos on ClassDojo on Wednesday showing the different PE sessions.

Congratulations to all those pupils who achieved their bronze, silver and now gold awards. Well done to you all and I look forward to presenting more certificates next week.

Well done to those children who attended the panathlon event on Tuesday of this week.

The Chaplaincy team delivered their 'Celebration of the Word' on Leadership this week. They asked all pupils about how they can be leaders within their own lives.

Thank you to all of the classes who attended Mass this week. You were all extremely well behaved throughout the service. Year one pupils made thank you cards for Father Emmanuel.

Star of this week was presented by Miss Kemp.

Please do ensure that all items of school uniform, coats, hats, bags etc. are clearly labelled. We often have a number of unlabelled items in each class!

On Monday 5th February, year 5 will have an extra long swimming session from 2.15pm to 3.15pm. Pick up arrangements remain the same.

Please note the new dates from the PTA with their upcoming activities, we'll add these to ClassDojo in due course. Thank you to the PTA for everything you are doing!! Please play our school lottery if you can - all profits go to our PTA and are used to enrich the children's learning.

We sent out this week the letters with regards to the parent/carer consultations for RSHE. Please do read these important documents as soon as you can. We have also sent out the information about the year 5 residential trip to The Briars and the year 6 residential trip to Lea Green. Please do complete the consent forms and return these to the school office at your earliest convenience,

Have a lovely weekend.

Mrs Chapman.

**THE WINNING HOUSE FROM LAST HALF TERM WAS FATIMA – THEY WILL HAVE THEIR PRIZE ACTIVITY ON FRIDAY 9TH FEBRUARY AT 2.15PM WITH MEMBERS OF THE PTA. THERE WILL BE NO STAR OF THE WEEK ASSEMBLY ON THAT DAY.**



# CLASS 2 PE SESSION – CATCHING SKILLS





# PANATHLON EVENT



# DATES TO NOTE

Monday 15th January to Monday 29th April	SATs after school revision club for all year six pupils, 3.20pm to 4.15pm every Monday
Wednesday 14th February	Valentines disco. Key stage one 5.00pm to 6.00pm and key stage two 6.15pm to 7.15pm. £2.00 per child which includes crisps and drinks. Children to wear red, white or pink! <b>PTA EVENT</b>
Thursday 15th February	Geography collapsed curriculum day – normal school uniform on this day please. All parents and carers are invited to come into school at 2.40pm to share in the children’s learning.
Friday 16th February	Wear your own clothes day, voluntary donation of £1.00 per child <b>PTA EVENT</b>
Monday 19th February to Friday 23rd February	Half term holiday
Monday 26th February	INSET day – school closed to pupils
Thursay 14th March	Parents meeting regarding the residential trip to The Briars (year 5 only) 3.20–4.00pm
Monday 18th and Tuesday 18th March	Parents consultation sessions
W/C Monday 25th March	Holy Week
Thursday 28th March	Lenten service in school at 1.30pm – everyone is very welcome to attend. School closes at 2.00pm on this day. There will be no after school club on this day
Friday 29th March to Monday 15th April	Easter holidays and INSET day
Tuesday 16th April	National primary places offer day
Wednesday 17th April	Class photos
Wednesday 8th May to Friday 10th May	Year five residential trp to The Briars
W/C Monday 13th May	SATs week
Thursday 16th May	Parent meeting regarding the residential trip to Lea Green (year 6 only) 3.20pm–4.00pm
Thursday 23rd May	Class one assembly 9.15
Thursday 23rd May	Science collapsed curriculum day
Monday 27th May to Friday 31st May	Half term holidays
Thursday 13th June	Class three assembly 9.15am
Thursday 20th June	Class two assembly 9.15am
Wednesday 26th June to Friday 28th June	Year six residential trip to Lea Green
Monday 15th July	Class four end of year production dress rehearsal (all invited) 1.30pm
Tuesday 16th July	Class four end of year production (all invited) 6.00pm





# VALENTINES DISCO



**WEDNESDAY 14TH FEBRUARY**  
**IN THE SCHOOL HALL**

**DRESS IN PINK WHITE OR RED**

**KS1 - 5-6PM**

**KS2 - 6.15-7.15PM**

**£2 PER CHILD**

**INCLUDES A DRINK AND A SNACK**

# SCHOOL COMMUNITY NOTICES



**If anyone has any clothes at home that belong to school, please send them back to us ASAP!!**

**Our dinner table discussion this week was 'is taking pity on someone a good thing?'**

If you don't currently have access to ClassDojo but you would like to, please speak to the school office.

**"The purpose of education is to give the body and to the soul all the beauty and all the perfection of which they are capable."**  
**PLATO**

**Star of the Week this week was awarded to someone who shows compassion.**

Secondary Admissions Consultation - We have 2 consultations re Admissions in 2025-2026 running. Please click here for further details  
<https://www.srscmat.co.uk/governance/admissions/>

Please be very careful when parking outside school. Please drive slowly and don't park on the zigzags, even just to drop off. This helps to keep our children safe.

If anyone has changed their name, phone number, address, e-mail address etc. recently please do let us know so that we can amend the database. It is vital that we hold the correct contact details for everyone.

High attendance is vitally important to every child, educationally, socially, and legally. This is a good opportunity to remind everyone holidays should not be booked during term time. Headteachers are not permitted to authorise absences unless there are exceptional circumstances. This does not include reduced holiday costs. If a child is not in school and the absence is not authorised, we are under a duty to report this to the Local Authority who may issue you with a penalty notice.

**Our statement of belief this week was - I know I belong in a community that includes my school.**

**SCHOOL ATTENDANCE WAS 93.7% THIS WEEK!**

# OUR MISSION STATEMENT

## S – Service and Stewardship

- We care for each other – ‘Love one another as I have loved you’
- We understand our obligation and responsibility to other in our local, national and world wide communities.
- We are learning to become global citizens, courageously following in Jesus’ footsteps.
- We are working together to Building God’s Kingdom on Earth.
- We are helping to look after the most vulnerable in our communities.

## T – Togetherness

- We work together for the greater good.
- We work together cooperatively as a team.
- We are disciples of Christ and we show this through our actions.
- We are stronger together.

## M – Mission

- We ensure all of our pupils receive the best learning opportunities through the provision of a broad and diverse curriculum.
- We bring Christ to all of our children, ensuring that he is front and centre in everything we do – ‘Rip of the Roof’.
- We are the living Gospel.
- We strive to be the best we can be and achieve our God given potential.

## A – Awe and Wonder

- We are inspiring our pupils to be future leaders.
- We recognise the awe and wonder in God’s creation.
- We recognising our uniqueness in the eyes of God.
- We are being inspired to learn more, know more and understand more.

## R – Reconciliation and Forgiveness

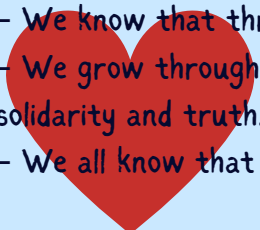
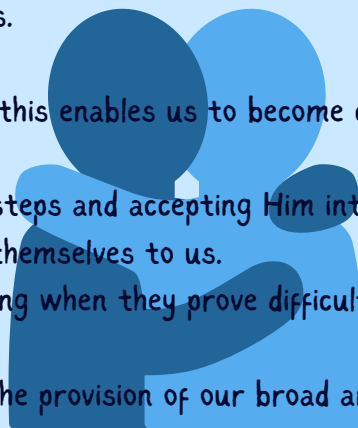
- We know how to say sorry and recognise when we have done something wrong.
- We know how to ask God and others for forgiveness.
- We know how to forgive others as God forgives us.
- We know that we can learn from our mistakes and this enables us to become closer to God.

## Y – Yes!

- We are Saying ‘yes’ to God by following in His footsteps and accepting Him into our hearts.
- We are Saying ‘yes’ to opportunities that present themselves to us.
- We are saying ‘yes’ to new challenges and persevering when they prove difficult.
- We are saying ‘yes’ to helping those in need.
- We are saying ‘yes’ to achieving our best through the provision of our broad and diverse curriculum.
- We are saying ‘yes’ to celebrating our differences.

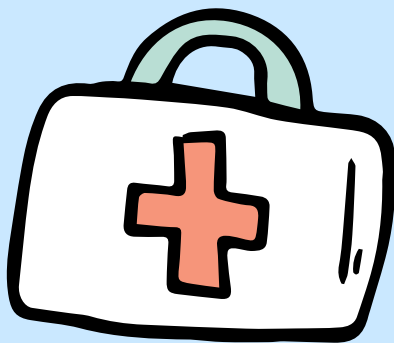
## S – Spirituality

- We recognise our faith in God and that we are all part of something greater.
- We know that through prayer we discover who we are and why we are here.
- We grow through our Gospel Values, of acceptance, hope, faith, courage, honesty, love, charity, solidarity and truth.
- We all know that “I am Important and Precious because God loves me”.



# SCHOOL HEALTH

There is lots of information available about children and young people's health, including the school nursing team, vaccinations and the national child measurement programme here – [www.derbyshire.gov.uk/social-health/health-and-wellbeing/your-health/children-and-young-peoples-health/children-and-young-peoples-health.aspx](http://www.derbyshire.gov.uk/social-health/health-and-wellbeing/your-health/children-and-young-peoples-health/children-and-young-peoples-health.aspx)



Information about the neurodiversity hub, which is based in Buxton, can be found here – [www.zink.ork.uk](http://www.zink.ork.uk)

There is also lots of information on our school website, including information about the foodbank here – <https://www.stmarysnewmills.srscmat.co.uk/parents/family-support-and-school-health/>





# SAFEGUARDING

If you have any concerns about a child or something else, please contact one of St Mary's designated leads for Safeguarding on [safeguarding@nmm.srscmat.co.uk](mailto:safeguarding@nmm.srscmat.co.uk), who are:

**Mrs Chapman – Headteacher and Senior Safeguarding lead**

**Mrs Mallabar – Designated Safeguarding Lead, Class Teacher and Mental Health Ambassador**

**Mrs Laura Chapman (SENCO) – Designated Safeguarding Lead**

**Mr Matthew Pearson – Designated Safeguarding Lead**

Please see the school website here:

<https://www.stmarysnewmills.srscmat.co.uk/parents/snow-procedures/>  
for our adverse weather procedures

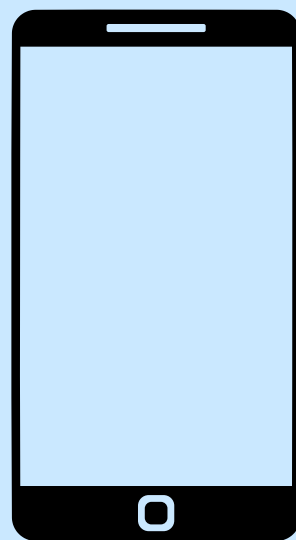
As a school, we are always here to support you and your family. If your family circumstances have changed, for example a loss of a loved one, a separation or even a house move, please do let us know. Changes like these will impact children and it would really help if we knew about your changing circumstances to help us best support you all.



# SAFEGUARDING ONLINE

**SCHOOL CHROMEBOOKS – AS A REMINDER, THE CHROMEBOOKS THAT KEY STAGE TWO CHILDREN BRING HOME EVERYDAY ARE ONLY TO BE USED FOR LEARNING. IN SCHOOL, THE CHROMEBOOKS ARE FILTERED TO ENSURE THAT NO INAPPROPRIATE SITES CAN BE ACCESSED BUT ONCE THE DEVICE IS TAKEN HOME, WE DO NOT HAVE CONTROL OF WHAT IS VIEWED AS THIS IS LINKED TO YOUR HOME WI-FI CONTROLS. CHILDREN SHOULD NOT BE ACCESSING SITES SUCH AS TIKTOK, YOUTUBE, FACEBOOK ETC. ON THESE DEVICES. CHILDREN SHOULD NOT BE LEFT UNSUPERVISED ON THEIR CHROMEBOOKS. IF WE FIND THAT CHILDREN ARE NOT USING THEM PROPERLY, WE WILL REMOVE THE DEVICES FOR HOME USE. A NEW ACCEPTABLE USE AGREEMENT WILL BE SENT OUT IN DUE COURSE.**

Some of our children may have been lucky enough to receive new devices for Christmas, such as a mobile phone, games console or tablet. It is therefore really important to think about keeping our children safe online. Please do set parental controls on your children's devices so that you can control what they see and how long they can use their devices for. It is also vital to talk to your children about why you are doing this and let them know that they can talk to you if they see something inappropriate or upsetting.



The NSPCC have some fantastic resources which are free to access, explaining how to keep children safe online and how to set parental controls – <https://www.nspcc.org.uk/keeping-children-safe/online-safety/#guides>

They also have guides about social media platforms and how to help children stay safe when using them. As a reminder, **no primary school age pupils should be accessing social media at all.**



Please also be alert to children watching films or playing games which are not appropriate for their age and stage. Always follow the age guidance and be mindful of young children watching upsetting or violent films or playing games not meant for their age. This can be very distressing and can cause long term harm.



# EXTRA INFORMATION

**4TH FEBRUARY**

**1-2PM**

**GLOSSOPDALE SCHOOL**


**SESSIONS RUN FORTNIGHTLY**

**£15 FOR 6 SESSIONS FOR AGES 4+**

Indoor Winter training sessions  
Mix of soft & hard ball training (depending on age)  
Multiple ECB qualified coaches

Contact **Richard Tranter** on **07891634885** or through the Hadfield St Andrews social media

**HADFIELD WINTER NETS**



\*\*\*Half Term Art workshops\*\*\*

Kids Art Clubs will be running some studio based workshops over the half term

Workshops will run from 10-3pm. Early drop off is available and sibling discounts.

Places for the sessions are limited so please book sooner rather than later to avoid disappointment.

Smaller numbers for a more nurturing and safe space for our mini artists.

ALL sessions will run out of our studio at Photojenix in New Mills.

Monday 19th Feb

Thursday 22nd Feb

<https://kidsartclubs.classforkids.io/camp/10>

**EVERY MINUTE COUNTS**

CHILDREN FIND ARRIVING LATE FOR SCHOOL UPSETTING AND THEY MISS OUT ON IMPORTANT OPPORTUNITIES. PLEASE WORK WITH US TO PROVIDE YOUR CHILD WITH THE BEST CHANCES OF LEARNING BY ENSURING THEY ARE IN SCHOOL EVERY DAY AND ON TIME.

SAINT MARY'S CATHOLIC VOLUNTARY ACADEMY

**8.45AM**

Your child has arrived in good time to meet friends and get ready for morning work in class.

The school day begins at 8.45am with soft start for key stage one. The classrooms are open and children should come into school.



**8.55AM**

The register is completed. Children should be ready to start their learning.



**9.00am**

**Your child is late and has missed the beginning of the school day. 5 minutes late means 3 days lost per year.**

**9.10AM**

The teacher has explained the learning and lessons have started.



**9.10am**

**- 15 minutes late means 9 days lost per year**

**9.15AM**

Lessons are well underway and work is being produced.



**9.15am**

**- The register closes. Any arrival after this time is an unauthorised absence.**

**Could your child be entitled to Free School Meals?**

For every pupil registered, the school will receive additional funding in the school budget called Pupil Premium which is used to help raise achievement levels.

By ensuring that as many eligible families as possible have applied for free school meals, we will receive our maximum Pupil Premium funding which enables us to provide the best education for our pupils.

**Search 'Derbyshire County Council Free School Meals' for the link to apply!**

We encourage parents of children who receive Universal Infant Free School Meals to still apply for Free School Meals as this will ensure school receives essential funding.

Please contact the school office if you need any support applying for Free School Meals.

# Enter our **Super Draw**

## Win a £1,000 Luxury Getaway

**OR £1,000 CASH PRIZE**



- Tickets cost just £1 a week
- Chance to win up to £25,000
- Play weekly, or just play the Super Draw!
- Get away from it all in 2024!



**YOUR  
SCHOOL  
LOTTERY**

**PLAY NOW:**

Go to

[www.yourschoollottery.co.uk](http://www.yourschoollottery.co.uk)

Search for: **St Mary's New Mills**



Gamble**Aware**

See website for Terms & conditions. Enter by 27/01/24