

Dialogue and Encounter

Year 1 – Branch 6

Big Question.

How do signs and symbols help us to understand what people of faith believe?

Key Vocab

Christian	Someone who is a follower of Christ
cross	symbol of Christianity
parish	Gathering or community of people who come together to worship.
Church	Place of worship for Catholics. The house of God.
symbols	A picture or image used to represent something else.
global community	A family of sisters and brothers across the world.
Judaism	A religion from the ancient Hebrews believing in one God.
Torah	The holy scrolls of the Jewish faith.

The Church is the community of all those who belong to Christ.



The sign of the cross symbolises the Catholic belief in Father, Son and Holy Spirit.

Sticky Knowledge.



The cross is a symbol of Christianity.



Catholics are part of a global community.

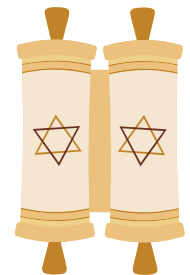


CAFOD support overseas development.

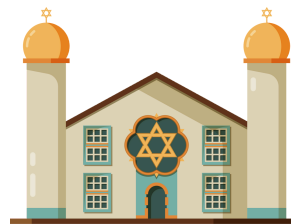
Jewish people had a special relationship with God in the Old Testament. They believe in one God and follow his rules.



The Jewish symbol of faith is the Star of David.



The Torah is the Jewish holy book. It is a set of 5 scrolls.



The Jewish place of worship is called a Synagogue.



Jesus was a Jew.