



24TH OCTOBER 2025

FRIDAY NEWSLETTER

SAINT MARY'S CATHOLIC VOLUNTARY ACADEMY

A warm welcome to the last newsletter of this term. A very busy week with lots of different activities across the school and further afield!

Thank you so much to all the parents and carers who attended the consultations this week. As per past years, we have had a very high attendance rate.

On Wednesday, we had our whole school collapsed curriculum day based on History. Class 4 compared a range of civilisations; Islamic, Europe and the rest of the world. Class 3 focused on the Egyptians, classes 1 and 2 looked at the history of space. Thank you to all the parents and carers who attended our Wednesday walk through in religious education. In the same afternoon several of our pupils were out in their forest school session. They certainly had a wonderful time making dens.

Our year six pupils completed their pilgrimage walk from St Mary's Marple Bridge to St Mary's New Mills with parishioners and the pupils from St. Mary's Marple Bridge school on Thursday. This walk was celebrated at church with a whole school mass. Some of our class 4 boys also attended the small school football tournament in Glossop. They finished second which is a huge achievement and shows how hard they worked. A big 'thank you' to Mr Oakes for coaching at the event.

Thank you so much to our amazing PTA for all their hard work in planning an end of term school disco. The children had a wonderful time and the dancing was very impressive!

Just a quick reminder about the class 3 trip on the first Tuesday back in school, the 4th November. Please remember packed lunches and an early start!

Have a lovely week at half term with your families and we'll see everyone back in school on Monday 3rd November.

Mrs Chapman.

The Diocesan guide to the Jubilee and more information about the Jubilee can be found here - <https://www.stmarysnewmills.srscmat.co.uk/catholic-life/r-e/>



Copies of both the school newsletters and the Parish newsletters can be found here - <https://www.stmarysnewmills.srscmat.co.uk/news/newsletters/>
Our Catholic life and mission newsletter can be found here <https://www.stmarysnewmills.srscmat.co.uk/catholic-life/catholic-social-teaching/>
Our Trust newsletter can be found here <https://bit.ly/30Qsidi>

APPLICATIONS FOR SCHOOL PLACES SEPTEMBER 2026

ADMISSIONS TO PRIMARY SCHOOL FOR SEPTEMBER 2026

SOME IMPORTANT DATES FOR YOU:

OUR OPEN DAYS ARE SATURDAY 11TH OCTOBER 10.00AM TO 11.30AM THEN
WEDNESDAY 12TH NOVEMBER AND WEDNESDAY 10TH DECEMBER, BOTH
9.00AM TO 10.00AM. COME AND SEE OUR SCHOOL IN ACTION! WE ALSO HAVE
A CHRISTMAS CRAFTS MORNING ON FRIDAY 5TH DECEMBER 9.30AM-10.30AM

APPLICATIONS FOR PRIMARY SCHOOL PLACES FOR SEPTEMBER 2026 OPEN
ON **MONDAY 10TH NOVEMBER AT 9.00AM**. A GUIDE ON HOW TO APPLY FOR A
SCHOOL PLACE CAN BE FOUND HERE -

[HTTPS://WWW.DERBYSHIRE.GOV.UK/EDUCATION/SCHOOLS/SCHOOL-
PLACES/PRIMARY-ADMISSIONS/PARENTSGUIDE/PARENTS-GUIDE-TO-
PRIMARY-ADMISSIONS.ASPX](https://www.derbyshire.gov.uk/education/schools/school-places/primary-admissions/parents-guide-to-primary-admissions.aspx)

IF YOU NEED ANY HELP WITH THE ADMISSIONS PROCESS OR IF YOU HAVE ANY
WORRIES OR QUESTIONS AT ALL, PLEASE JUST LET US KNOW!
[INFO@NMM.SRSCMAT.CO.UK](mailto:info@nmm.srscmat.co.uk) OR 01663 742412



The applications
process for primary
school places opens on
Monday 10th November!

If you would like to come and look around
school, please ring 01663 742412 or e-mail
info@nmm.srscmat.co.uk

We also have two open mornings, we'd
love to see you then! Please see the
posters for more information.

To see our school prospectus, please visit
our website:
[www.stmarysnewmills.srscmat.co.uk/paren
ts/prospective-parents](http://www.stmarysnewmills.srscmat.co.uk/parents/prospective-parents)

We would love to welcome you and your
child to the Saint Mary's family!

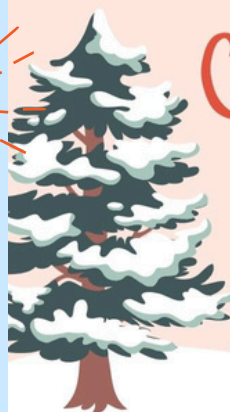


Longlands Road, New Mills, High
Peak, Derbyshire, SK23 9BL
www.stmarysnewmills.srscmat.co.uk

Please do let us know if
you can come!
joxley@nmm.srscmat.co.uk
or 01663 742412

You are invited to a:

Christmas crafts morning



We'd like to invite children due to start primary school in September 2026 to join us for a
Christmas crafts morning on Friday 5th December from 9.30am to 10.30am at Saint
Mary's Primary School, Longlands Road. Everyone is welcome!



THIS WEEK'S CELEBRATION OF THE WORD



Mary's Missionaries



Week 29 in Ordinary Time

Year C

Gift of the Holy Spirit

Piety

Sunday

First Reading:
Exodus 17:8-13

Gospel Reading:
Luke 18:1-8

Suggestions

Hebrew Bible:
Micah 6:6-8

New Testament:
Matthew 6:5-6

Theme

Piety is about living a life of devotion to God. It's about nurturing our relationship with him through prayer, worship, and study of scripture. It's about recognising his presence in our lives and responding with gratitude and love. Piety isn't just about outward actions; it's about an inner disposition, a heart turned towards God. When we live with piety, we allow God's love to transform us and make us more like him

Mission

Try and visit a Church or sacred space this week and spend some time with God.

OCTOBER 2025 - YEAR C - 29TH WEEK IN ORDINARY TIME



Piety

Virtue Link: **Diligence**
 CST Link: **Common Good**
 Mission: **Try and visit a Church or sacred space this week and spend some time with God.**

Piety is about living a life of devotion to God. It's about nurturing our relationship with him through prayer, worship, and study of scripture. It's about recognising his presence in our lives and responding with gratitude and love. Piety isn't just about outward actions; it's about an inner disposition, a heart turned towards God. When we live with piety, we allow God's love to transform us and make us more like him

SUNDAY	MONDAY	TUESDAY	WEDNESDAY	THURSDAY	FRIDAY	SATURDAY
19TH	20TH	21ST	22ND	23RD	24TH	25TH
29 ORDINARY TIME 	Monday of Week 29	Tuesday of Week 29	Wednesday of Week 29 	Thursday of Week 29 	Friday of Week 29 	Saturday of Week 29

Message from the immunisation team – Derbyshire

Dear Parent/Carer,

If you would like your child to receive the flu vaccine in school this year, please follow this link to complete an online consent form. If you would like to decline, please complete a no consent form on the attached link.

<https://nhsImms.azurewebsites.net/session/dd3dle98>

The vaccinations will take place at your child's school on the 24/11/2025. The link will close on the 10/11/2025. If your child has already had the Flu vaccine elsewhere since Sept 2025, please disregard this message. If you have any problems accessing the link, please telephone 0333 3583 397 option 5 option 2.

Service provided by:



**Derbyshire School Aged
Immunisation Service**

WWW.INTRAHEALTH.CO.UK/DERBYSHIRE

WWW.FACEBOOK.COM/DERBYSHIRE



PARISH NEWS



CHILDREN'S LITURGY DATES AUTUMN/WINTER 2025

NOV. 9TH, 16TH, 23RD, 30TH

DEC. 7TH, 14TH.

Our PE kit is: a plain white t-shirt and black shorts, black jogging bottoms and a royal blue hoodie or sweatshirt. Trainers should be designed for sport, well fitting and in good condition.

No earrings should be worn on PE days. If you cannot remove your child's earrings, please tape them up before school. This helps to prevent injuries.



Children should not be wearing Ugg style boots, Converse style trainers or leggings on non PE days.

All children with long hair should have their hair tied back every day.




OUR PE DAYS ARE:

CLASS ONE - MONDAY AND FRIDAY

CLASS TWO- MONDAY AND WEDNESDAY

CLASS THREE- THURSDAY AND FRIDAY

CLASS FOUR- MONDAY AND FRIDAY

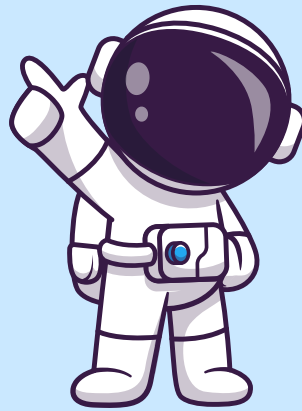
- ✓ **ACTIVE WEAR SHOES TO BE WORN EVERY DAY** 
- ✓ **PE KIT TO BE WORN ON PE DAYS**
- ✓ **WATER BOTTLE NEEDED EVERY DAY** 
- ✓ **COAT SUITABLE FOR THE CONDITIONS ON THE DAY NEEDED EVERY DAY** 

On non PE days, girls should wear their school sweatshirt or cardigan, a white shirt or polo shirt, a grey pinafore, skirt or trousers or a blue gingham summer dress in summer. Boys should wear a school sweatshirt, grey trousers, a white shirt or polo shirt, grey or black socks and grey school shorts in summer.

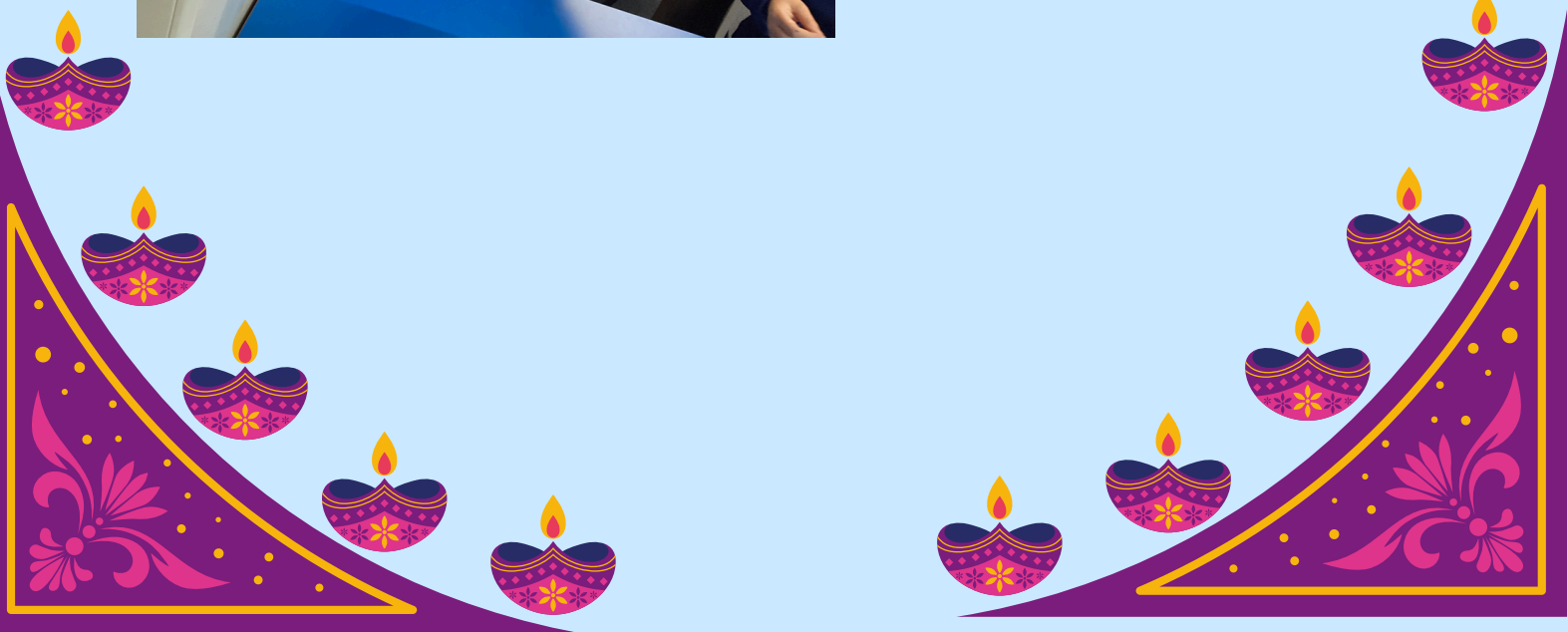
All items of clothing should be labelled with your child's name.
Active wear shoes should be worn every day.



OUR SCHOOL WEEK – CLASS 1 IN SPACE



OUR SCHOOL WEEK – LEARNING ABOUT DIWALI, THE HINDU FESTIVAL OF LIGHTS



OUR SCHOOL WEEK – OUTDOOR PROVISION



OUR SCHOOL WEEK – OUTDOOR PROVISION



OUR SCHOOL WEEK – WALK OF PILGRIMAGE



OUR SCHOOL WEEK – FOOTBALL COMPETITION





EVERYONE IS INVITED! STAR OF THE WEEK ASSEMBLY

EVERY FRIDAY WE HAVE A STAR
OF THE WEEK ASSEMBLY
STARTING AT 2.30PM. EVERYONE
IS WELCOME TO ATTEND!

Please check ClassDojo for any changes to
the assemblies.

School attendance

The importance of school attendance

We want our children at Saint Mary's to enjoy coming to school and to love their learning. Our attendance target for the whole school is 95% or above.

Research shows that there is a high correlation between school attendance, academic performance and success. Absence from school is often the biggest single cause of poor performance and achievement.



Why is it so important to attend every day?

- Learning is a progressive activity; each day's lessons build upon those of the previous day(s). Each missed lesson is a missed learning opportunity.
- Reading the material and completing work independently does not compensate for direct interaction with a teacher.
- Teachers often use whole class discussions, demonstrations, debate, experiments and small group work as part of their daily learning activities, and these cannot be caught up by those who are absent.
- Parents and carers have a legal duty to ensure that their child receives an education.

Are there other benefits to my child?

- Pupils with good attendance records generally achieve higher grades and enjoy school more.
- Having a good education will help to give your child the best possible start in life.
- Regular school attendance patterns encourage the development of other responsible patterns of behaviour including independence skills and life skills.

What are the risks of frequent absences?

- A child who does not attend school regularly will be unlikely to keep up with the work.
- The more a child misses school, the lower their grades; the lower their grades, the less they want to stay be school. The only way to break this cycle is regular, high levels of attendance.

What can parents do to help?

- Parents and carers must model how they value education, including the importance of regular attendance, good punctuality, being respectful to teachers etc.
- If your child starts missing school, work with us to put things right. We are here to support you.
- If your child is ill or must miss school for some other reason, contact school immediately.
- Take an interest in your child's schoolwork and be involved in the school as much as possible – your child will value school more if you do. Come to assemblies, join the PTA, attend parent consultation appointments etc.
- Read with your child/children every night. Reading helps to build a strong and rich vocabulary. It increases empathy, showing children new perspectives and new worlds. Even five minutes per night is hugely beneficial.
- If you are not sure if your child should attend school due to illness, contact the school office who will advise you.

Check your child's attendance percentage on the Arbor app and compare it to this grid!

If you don't have access to Arbor, please let the school office know.



If you need help to increase your child's attendance, speak to your class teacher or the school office.

DATES TO NOTE

Upcoming dates can also be seen on ClassDojo and on our website. Please note that dates and times may change due to circumstances beyond our control.

Monday 27th October – Friday 31st October	Half term holidays
Friday 31st October	Secondary school admission window closes
Tuesday 4th November	Class 3 trip to Manchester Museum
Wednesday 5th November	Fire safety event with Derbyshire fire and rescue
Saturday 8th November	Parish Christmas fair 10.00am–1.00pm
Monday 10th November	Primary school admissions window opens
Monday 10th November to Friday 14th November	Anti bullying week
Wednesday 12th November	Open day for prospective parents/carers 9.00am–10.00am
Thursday 13th November	Mission day
Wednesday 19th November	Reception activity day
Thursday 20th November	Class 2 assembly – 9.10am. All welcome
Monday 24th November	Flu immunisation – all afternoon
Wednesday 26th November	Whole school mini first aid training
Thursday 27th November	Class 1 assembly – 9.10am. All welcome
Thursday 4th December	Fair trade tuck shop

Buxton *Advertiser*

FIRST CLASS 2025 SOUVENIR EDITION

20th NOVEMBER 2025

Dear Parent/Guardian

The Buxton Advertiser is delighted to be producing a special 'First Class' souvenir edition on 20th November 2025, marking your son or daughter's all-important first days at primary school.

This edition will feature full colour photographs submitted to us from schools across the local area. This is a fantastic opportunity to commemorate your child's early years in school, and a keepsake that you and your family can treasure for years to come.

The copies will be available in local retail outlets from the 20th November 2025 for a week, but demand will be high, so to avoid possible sell out disappointment, or for family members out of the area, we are giving you the chance to pre-order your postal keepsake edition/s.

Postal Pre-order Price is just £4.75 for one copy or £7.25 for two. Includes a 20% discount on the cover price plus postage.

Order by Phone: Call 0330 403 3004, lines open 9.30am - 4.30pm Monday to Friday

Order Online: Visit buxtonadvertiser.eventbrite.co.uk . Please note that website orders are subject to additional fees which are set and charged by Eventbrite.

Order Deadline : 16th November 2025

Delivery: Copies will be posted to the address supplied in your order via Royal Mail's Tracked 24 service on the day of publication. You will be notified via email/SMS once dispatched with your Tracking Number.

If you do not want your child to appear in the photograph, please contact your school office. Photographs will be published in the newspaper, may appear online, and may be promoted via social media.

If you have any questions please do not hesitate to contact us on 0330 403 3004 or via email at specialitions@nationalworld.com.

Yours faithfully

Amy Best
Buxton Advertiser



ABSENCES DURING TERM TIME

The Department for Education (DfE) have introduced some new guidance for schools and Local Authorities (LAs) for managing school attendance. They have also introduced a new national framework for penalty notice and amended the law. These changes come into effect from the 19 August 2024 and all schools and LAs across the country will be expected to follow the new statutory guidance.

Support first

The importance of regular attendance at school cannot be stressed enough. All schools and LAs are expected to promote school attendance and provide support to remove barriers where a pupil is struggling to attend school. This may mean that the school raises the issue of attendance even if your child has only had a couple of days off ill. This is not because they don't believe you. By working with you, schools can step in early to help to prevent patterns of absence developing. Schools may identify other underlying issues that are making your child reluctant to attend school and be able to help you and your child.

For this to be successful parents need to work with the school. Where it can be demonstrated that a parent/carer is not fulfilling their parental responsibility to ensure that their child receives a suitable full-time education then the school can consider requesting that the LA take further action. This can be in the form of a penalty notice, prosecution, or the school may suggest other formal interventions.

National Framework for penalty notices

To provide consistency, the Government have introduced a new national framework for when schools and LAs believe that they have exhausted all offers of support and the parent/carer is not engaging with the attempt to improve their child's attendance at school.

The threshold for when a school should consider next steps is 10 sessions (5 school days) of unauthorised absence in a rolling period of 10 school weeks.

A school week means any week in which there is at least one school session. This can be made up of any form of unauthorised absence including late after close (attendance code U) of register and odd days of unauthorised absence (attendance code O) which add up to 5 days within a 10-week period. At this point the school will consider if it is likely that the attendance will improve with further support. They may then decide to refer the case to the LA for formal monitoring. This may proceed to legal action if the attendance does not improve.

Education Penalty Notices are issued to parents of statutory school age children. They can be issued to each parent or carer who is deemed liable for the child's absence from school. The new costs and process is outlined below:

First Offence – The first time a Penalty Notice is issued for Term Time Leave or Irregular Attendance the amount will be: **£160** per parent, per child paid within **28** days. Reduced to **£80** per parent, per child if paid within **21** days.

Second Offence (within 3 years) – The second time a Penalty Notice is issued for Term Time Leave or Irregular Attendance the amount will be: **£160** per parent, per child paid within **28** days.

Third Offence and Any Further Offences (within 3 years) – The third time an offence is committed for Term Time Leave or Irregular Attendance a Penalty Notice will not be issued, and the case will be presented straight to the Magistrates' Court.

Term time holidays

Pupils should not be taken out of school during term time unless it is unavoidable. Schools are required to consider requests for leave of absence in term time and should only approve the leave if there are exceptional circumstances. If a request for leave is denied and the pupil is absent for 5 days or more then the school is expected to refer the case to the LA. The LA will issue a penalty notice with no requirement for a formal warning to be issued. Penalty notices can also be issued where a pupil is absent for repeated incidents of unauthorised leave in term time that fall below the 5-day threshold. In every case, the request for the Penalty Notice comes in from the school to the LA for the process to be completed.

New registration codes

You might find that your child's attendance report looks slightly different next year. The DfE have amended some of the codes to include numbers as well as letters. These new codes are to enable schools, LA and the DfE to better understand the reasons for absence. For example:

Code C: Leave of absence for exceptional circumstance.

Code C1: Leave of absence for the purpose of participating in a regulated performance. The important thing for you as a parent is still the C which means that the absence was authorised. There is also a new code which has been introduced for pupils who are on the school roll but are temporarily being provided with an alternative education by the local authority, such as a home tutor.

Code K: Attending education provision arranged by the local authority.

Full details of all of the changes can be found by visiting the Government webpage: <https://www.gov.uk/government/publications/working-together-to-improve-school-attendance>

What Parents & Educators Need to Know about FORTNITE



WHAT ARE THE RISKS?

With over 650 million registered users, Fortnite remains one of the most played and discussed online games globally. Known for its vibrant graphics, fast-paced gameplay, and cultural crossovers with everything from music artists to superhero franchises, the game continues to capture the attention of young people. This guide outlines the risks trusted adults need to know about, including game updates, and offers practical safety tips to help address them.

ALWAYS ONLINE

There's no single-player, offline mode in Fortnite; it can only be played online. Internet access can sometimes be an issue when you're out and about, both in terms of connectivity and using up data. You may find that dedicated, young Fortnite players are often less enthusiastic about family time or trips away – such as days out and holidays – than you might expect.

IN-GAME COSTS

Fortnite is free to download and play, but it does offer various additional purchases – limited-time cosmetic 'skins', music tracks, LEGO items, and battle passes. Children can feel pressured to spend money on V-Bucks – the in-game currency – to avoid missing out, particularly as exclusive items rotate frequently. Some items may not return to the store for years, while Battle Pass rewards are often "gone when they're gone".

VIRTUAL VIOLENCE

There's no avoiding that Fortnite is about shooting other players to eliminate them from the contest. That said, there's no blood or gore. The violence is rendered in a cartoonish style, and there are frequent comical touches to lighten the mood, such as mini-games and emotes. Guns and other weapons often look and behave realistically, so discretion is advised. Past seasons have introduced characters and references from mature franchises like *The Witcher* and *Halo*.

CROSSPLAY AND PARTY CHAT

Fortnite is popular with many gamers of various ages. Crossplay allows friends to play with each other, regardless of whether they're on an Xbox, PlayStation, Nintendo Switch or PC, while the Party Chat feature allows them to talk to each other during the game. This can put youngsters at risk of exposure to strangers, inappropriate language, and cyberbullying.

FREQUENT UPDATES

Seasonal releases introduce new map changes, gameplay mechanics, and cosmetics. Ongoing updates can increase screen time and potential for obsession as children try to unlock rewards before the season ends. These regular renewals help to hold players' interest, but also give young gamers plenty of reasons to keep coming back. Seasons often change thematically.

POP CULTURE REFERENCES

Part of Fortnite's appeal is its ongoing crossovers with other popular franchises, ranging from films and TV shows like *Power Rangers* and *Avatar: The Last Airbender*, to comic book characters including *Batman*. Other collaborations with series, artists, and influencers may expose children to music, language, or ideas that are more suitable for older audiences.

Advice for Parents & Educators

DISCUSS SAFE SOCIAL INTERACTION

Talk with children about who they're playing with online. Coordinate play time with the child's friends for socialisation and safety in numbers. Encourage them to avoid private voice chats with strangers and remind them not to share personal information. Use real-life examples to explain potential risks, and remind them that if they see something concerning, they should tell a trusted adult.

SET SPENDING LIMITS

Fortnite's rotating store is a not-so-subtle mechanism for coaxing players into buying sought-after items before they disappear for weeks or months. This could lead to surprise transactions on bank cards if children are tempted into an impulse purchase. Parents could consider getting a prepaid card for the child or ensuring that purchases require adult authorisation. This can be done through parental settings on a console or account settings in the Epic Games app on PC.

ENJOY FORTNITE TOGETHER

Fortnite also offers split-screen gameplay, meaning that two people can play simultaneously on the same console or computer. This can be a good option for siblings or for when a child's friends visit, but it also offers an opportunity for parents to do something fun with their child, while making sure they're playing the game safely. Who knows? You might even teach them a thing or two!

BE WARY OF SCAMS

The immense popularity of Fortnite with younger audiences – that are generally more trusting – means there's no shortage of scammers looking to fraudulently obtain passwords and other personal data through techniques like phishing. As the developers point out on many of Fortnite's loading screens, they never ask for a player's account password outside of the game. Make sure any young player knows this.

Meet Our Expert

Lloyd Coombes is an experienced freelance writer and has been working in the gaming and tech industry for seven years. A regular visitor to the App Store to try out new tools, he's also a parent and therefore understands the importance of online safety. He's also a tech and fitness writer and has been published at sites including IGN, TechRadar, and plenty more.



The National College®

**IN AN EMERGENCY, WHEN THE SCHOOL ANSWERPHONE IS SWITCHED ON,
RING 07355 221723 TO SPEAK TO WRAPAROUND STAFF.**



Saint Mary's
Catholic
Voluntary
Academy, New
Mills.

Wrap Around Club

Our wraparound club includes lots of enrichment activities including gardening, sports, free play and homework support.



Arts and crafts



Lego and games



Sports and Fitness



Breakfast club runs Monday to Friday from 7.30am and includes cereal, toast and a drink. £4.00 per day

After school club runs Monday to Thursday (not Fridays) to 5.30pm and includes snacks, such as wraps, cheese and crackers, yogurts and a drink. £8.00 per day

**BOOK VIA
PARENTPAY FOR
THE SESSIONS
YOU NEED**



Call Us
01663 742412
Or e-mail
info@nmm.srscmat.co.uk



Use your tax-free childcare vouchers
**Speak to the school office
for more information!**

SCHOOL NOTICES

**No Star of the Week this week –
school disco**

If you don't currently have access to ClassDojo, ParentPay or Arbor but you would like to, please speak to the school office.



You can check your child's attendance percentage on Arbor! This is updated daily. Please let the school office know if you need any help with this.

**Activation details for
Arbor have been sent
out!**

No photography or videos are allowed on personal devices in school. This includes during sports days, assemblies, performances and school trips. This is to keep our most vulnerable children safe.

High attendance is vitally important to every child, educationally, socially, and legally. This is a good opportunity to remind everyone holidays should not be booked during term time. Headteachers are not permitted to authorise absences unless there are exceptional circumstances. This does not include reduced holiday costs. If a child is not in school and the absence is not authorised, we are under a duty to report this to the Local Authority who may issue you with a penalty notice.

If you need to drive to school, please drive and park considerately, avoiding the zigzags. We regularly get complaints from neighbours about poor parking, especially parking across the lane towards the top of Longlands Road. The police have confirmed that this lane is classed as a road, so blocking it is illegal. The people that live there are unable to leave if cars are blocking the lane, which means people are being made late for work, not able to get their own children to school, being late for appointments etc. This isn't fair. Please don't block this lane and please park using consideration.

Parking is available at the church and higher up Longlands road where the youth club is. If you can walk to school, or park a little further away, please do so. Thank you for reading this.

**Our dinnertime discussion this
week was –
'if we move the entire school
and everybody in it to Africa
would it still be the same
school?'**

SCHOOL ATTENDANCE WAS 95.2% THIS WEEK!

OUR MISSION STATEMENT

S – Service and Stewardship

- We care for each other – ‘Love one another as I have loved you’
- We understand our obligation and responsibility to other in our local, national and world wide communities.
- We are learning to become global citizens, courageously following in Jesus’ footsteps.
- We are working together to Building God’s Kingdom on Earth.
- We are helping to look after the most vulnerable in our communities.

T – Togetherness

- We work together for the greater good.
- We work together cooperatively as a team.
- We are disciples of Christ and we show this through our actions.
- We are stronger together.



M – Mission

- We ensure all of our pupils receive the best learning opportunities through the provision of a broad and diverse curriculum.
- We bring Christ to all of our children, ensuring that he is front and centre in everything we do – ‘Rip of the Roof’.
- We are the living Gospel.
- We strive to be the best we can be and achieve our God given potential.



A – Awe and Wonder

- We are inspiring our pupils to be future leaders.
- We recognise the awe and wonder in God’s creation.
- We recognising our uniqueness in the eyes of God.
- We are being inspired to learn more, know more and understand more.

R – Reconciliation and Forgiveness

- We know how to say sorry and recognise when we have done something wrong.
- We know how to ask God and others for forgiveness.
- We know how to forgive others as God forgives us.
- We know that we can learn from our mistakes and this enables us to become closer to God.

Y – Yes!

- We are Saying ‘yes’ to God by following in His footsteps and accepting Him into our hearts.
- We are Saying ‘yes’ to opportunities that present themselves to us.
- We are saying ‘yes’ to new challenges and persevering when they prove difficult.
- We are saying ‘yes’ to helping those in need.
- We are saying ‘yes’ to achieving our best through the provision of our broad and diverse curriculum.
- We are saying ‘yes’ to celebrating our differences.

YES

S – Spirituality

- We recognise our faith in God and that we are all part of something greater.
- We know that through prayer we discover who we are and why we are here.
- We grow through our Gospel Values, of acceptance, hope, faith, courage, honesty, love, charity, solidarity and truth.
- We all know that “I am Important and Precious because God loves me”.



SCHOOL HEALTH AND SEND

The SEND page of our school website can be found here –

<https://www.stmarysnewmills.srscmat.co.uk/information/send/>

There is lots of useful information about our SENCO, our SEND offer and support we can offer.

Please also see our SEND newsletter here –

<https://www.stmarysnewmills.srscmat.co.uk/news/newsletters/>

Latest news from Mrs Chapman – SENCO

Once a half term, I will also be offering an informal parent drop session, with a key focus. This is an opportunity for parents to chat, share experiences, ask for advice and support one another. I will aim to share resources at the drop-in and share some quick information about our SEND area focus before allowing parents to connect over coffee and cake!



There is lots of information available about children and young people's health, including the school nursing team, vaccinations and the national child measurement programme here –
www.derbyshire.gov.uk/social-health/health-and-wellbeing/your-health/children-and-young-peoples-health/children-and-young-peoples-health.aspx

Information about the neurodiversity hub, which is based in Buxton, can be found here – www.zink.org.uk

For more information about Elective Home Education, please see here –
<https://www.stmarysnewmills.srscmat.co.uk/information/send/>

SAFEGUARDING

If you have any concerns about a child or something else, please contact one of St Mary's designated leads for Safeguarding on safeguarding@nmm.srscmat.co.uk, who are:

Mrs Chapman – Headteacher and Senior Safeguarding lead

Mrs Mallabar – Designated Safeguarding Lead, Class Teacher and Mental Health Ambassador

Mrs Laura Chapman SENCO and class teacher – Designated Safeguarding Lead

Mr Matthew Pearson – Designated Safeguarding Lead, Class Teacher

Mrs Amy Hodgson – Designated Safeguarding Lead, Class Teacher

As a school, we are always here to support you and your family. If your family circumstances have changed, for example a loss of a loved one, a separation or even a house move, please do let us know. Changes like these will impact children and it would really help if we knew about your changing circumstances to help us best support you all.



SAFEGUARDING ONLINE

It is really important to think about keeping our children safe online. Please do set parental controls on your children's devices so that you can control what they see and how long they can use their devices for. It is also vital to talk to your children about why you are doing this and let them know that they can talk to you if they see something inappropriate or upsetting.

The NSPCC have some fantastic resources which are free to access, explaining how to keep children safe online and how to set parental controls – <https://www.nspcc.org.uk/keeping-children-safe/online-safety/#guides>

They also have guides about social media platforms and how to help children stay safe when using them. As a reminder, **no primary school age pupils should be accessing social media at all. Primary aged children aren't able to understand the consequences of decisions made when using social media, they are at risk because of WHAT THEY MIGHT SEE, WHO THEY MIGHT SPEAK TO and HOW THEY MIGHT BEHAVE. Please help to keep all of our children safe by ensuring that none of our children are using social media.**

Please also be alert to children watching films or playing games which are not appropriate for their age and stage. Always follow the age guidance and be mindful of young children watching upsetting or violent films or playing games not meant for their age, This can be very distressing and can cause long term harm.

SCHOOL CHROMEBOOKS – AS A REMINDER, THE SCHOOL CHROMEBOOKS THAT CLASS THREE AND FOUR CHILDREN HAVE ARE ONLY TO BE USED FOR LEARNING. IN SCHOOL, THE CHROMEBOOKS ARE FILTERED TO ENSURE THAT NO INAPPROPRIATE SITES CAN BE ACCESSED BUT ONCE THE DEVICE IS TAKEN HOME, WE DO NOT HAVE CONTROL OF WHAT IS VIEWED AS THIS IS LINKED TO YOUR HOME WI-FI CONTROLS. CHILDREN SHOULD NOT BE ACCESSING SITES SUCH AS TIKTOK, YOUTUBE, FACEBOOK ETC. ON THESE DEVICES. CHILDREN SHOULD NOT BE LEFT UNSUPERVISED ON THEIR CHROMEBOOKS. IF WE FIND THAT CHILDREN ARE NOT USING THEM PROPERLY, WE WILL REMOVE THE DEVICES FOR HOME USE.



EXTRA INFORMATION

EVERY MINUTE COUNTS



CHILDREN FIND ARRIVING LATE FOR SCHOOL UPSETTING AND THEY MISS OUT ON IMPORTANT OPPORTUNITIES. PLEASE WORK WITH US TO PROVIDE YOUR CHILD WITH THE BEST CHANCES OF LEARNING BY ENSURING THEY ARE IN SCHOOL EVERY DAY AND ON TIME.

Your child has arrived in good time to meet friends and get ready for morning work in class.

8.45AM

The school day begins at 8.45am with soft start for key stage one. The classrooms are open and children should come into school.



8.55AM

The register is completed. Children should be ready to start their learning.

9.00am – Your child is late and has missed the beginning of the school day. 5 minutes late means 3 days lost per year.

9.10AM

The teacher has explained the learning and lessons have started.

9.10am – 15 minutes late means 9 days lost per year



9.15AM

Lessons are well underway and work is being produced.



9.15am – The register closes. Any arrival after this time is an unauthorised absence.

Could your child be entitled to Free School Meals?

For every pupil registered, the school will receive additional funding in the school budget called Pupil Premium which is used to help raise achievement levels.

By ensuring that as many eligible families as possible have applied for free school meals, we will receive our maximum Pupil Premium funding which enables us to provide the best education for our pupils.

Search 'Derbyshire County Council Free School Meals' for the link to apply!

We encourage parents of children who receive Universal Infant Free School Meals to still apply for Free School Meals as this will ensure school receives essential funding.

Please contact the school office if you need any support applying for Free School Meals.

ST MARY'S CATHOLIC VOLUNTARY ACADEMY PTA PRESENTS



CHRISTMAS MARKETS



**CALLING ALL CRAFTERS AND
SMALL BUSINESS OWNERS!**

**COME AND JOIN IN THE CHRISTMAS FUN WITH A STALL
AT OUR CHRISTMAS MARKETS**

REACH OUT TO THE LOCAL COMMUNITY IN THE FESTIVE
SHOPPING SEASON

SUPPORT OUR SCHOOL

BE PART OF A FUN, FAMILY-FRIENDLY EVENT

ONLY £10 PER TABLE

**BOOK A SPACE TODAY - PLEASE CONTACT
STMARYSPTA.TREASURER.NEWMILLS@GMAIL.COM**

DECEMBER

SUNDAY

7

10am to 2pm

MY ACTIVE NEW MILLS, HYDE BANK ROAD,
NEW MILLS, SK22 4BP

COMMUNITY NEWS

MyActive New Mills

BOOK NOW



Introduction to Swimming Lessons

AN INTENSIVE BOOSTER COURSE SUITABLE FOR BEGINNERS

AGES 6-11 YEARS.

COURSE DATES: MONDAY 27TH UNTIL FRIDAY 31TH OCTOBER

COURSE TIME: 09:00-09:45

Bookable at reception or online @myactive.uk



JUNIOR HOCKEY

@ Buxton Hockey Club

WEDNESDAY NIGHTS!

- £4 a session
- Equipment available to borrow

Buxton Community School Astro


6-7pm

Ages 4-13

Everyone welcome!

CONTACT US

SCAN ME!



NEW MILLS JUNIORS

Soccer School 2025/2026

Free "taster sessions" for Year 1 boys and girls.

Sat 11th Oct & Sat 18th Oct
9am to 10am

Ollersett Playing Fields (Watburn Rd)

To enquire, email: secretary@nmjfc.co.uk






WE CAN PLAY

The FA

For ALL

MyActive New Mills

OCTOBER HALF TERM

MONDAY 27TH - FRIDAY 31ST OCTOBER

MONDAY 27	TUESDAY 28	WEDNESDAY 29 - 1 Year Anniversary Celebration	THURSDAY 30	FRIDAY 31
Lane Swim 07:00-08:30	Lane Swim 06:45-09:00	Lane Swim 06:45-09:00	Lane Swim 06:45-09:00	Lane Swim 06:45-09:00
Crash Course 08:00-10:00	Crash Course 09:00-10:00	Crash Course 09:00-10:00	Crash Course 09:00-10:00	Crash Course 09:00-10:00
Widths Only 10:00-10:45	Widths Only 10:00-11:00	Widths Only 10:00-10:45	Widths Only 10:00-11:00	Widths Only 10:00-11:00
Public Swim 10:45-11:30	Public Swim 11:00-11:45	Public Swim 11:00-11:45	Public Swim 11:00-11:45	Public Swim 11:00-11:45
Lane Swim 11:30-13:00	Lane Swim 11:45-12:15	Lane Swim 12:15-13:00	Lane Swim 12:15-13:00	Lane Swim 12:15-13:00
Training 13:00-15:15	Lane Swim 13:30-14:15	Family Swim (Free) 13:15-14:00	Lane Swim 13:30-14:15	Lane Swim 13:30-14:15
Learn to Swim 15:30-19:45	Lane Swim 14:30-15:15	Family Swim (Free) 14:00-14:45	Lane Swim 14:30-15:15	Lane Swim 14:30-15:15
Lane Swim 19:50-20:35	Learn to Swim 15:30-18:45	Public Swim (Free) 14:45-15:30	Lane Swim 15:30-18:45	Lane Swim 15:30-18:45
Stroke Technique 20:35-22:05	Public Swim 18:45-19:30	Learn to Swim 15:30-19:00	Lane Swim 18:45-19:30	Lane Swim 18:45-19:30
	Lane Swim 19:30-20:15	Marple Club 19:00-21:30	Lane Swim 19:30-20:15	Lane Swim 19:30-20:15
	Glossop Tri Club 20:15-21:00		Lane Swim 19:30-20:15	Lane Swim 19:30-20:15

INFLATABLE SESSIONS

ALL PARTICIPANTS MUST BE 8 YEARS + AND BE ABLE TO SWIM 25M (1 LENGTH) OF A RECOGNISED STROKE WITHOUT FLOTATION AIDS

ADMISSION POLICY RATIO 1 ADULT:2 UNDER 8'S

ALL SESSIONS ARE BOOKABLE IN ADVANCE. WE ADVISE TO BOOK AHEAD TO AVOID DISAPPOINTMENT DUE TO ALL SESSIONS HAVING A MAX CAPACITY. TIME TABLE CAN BE SUBJECT TO CHANGE. PLEASE REFER TO OUR WEBSITE/APP FOR UP TO DATE TIME TABLE

*CRASH COURSE MUST BE BOOKED IN ADVANCE AND WILL HAVE EXCLUSIVE USE OF POOL

HALLOWEEN FANCY DRESS PARTY

FREE ENTRY!

AGE 4-11

5-6PM

WEDNESDAY 29TH OCTOBER

MYACTIVE NEW MILLS

HYDE BANK ROAD, NEW MILLS, SK 22 4BP

TURN UP ON THE DAY NO TICKETS REQUIRED

CHILDREN 7 OR BELOW MUST BE ACCOMPANIED BY AN ADULT



Enter our **Super Draw**

**Win a £1,000 Amazon
Gift Card**

OR £1,000 CASH PRIZE



**YOUR
SCHOOL
LOTTERY**

- Tickets cost just £1 a week
- Chance to win up to £25,000
- Play weekly, or just play the Super Draw!
- Think about what you could spend it on!



PLAY NOW:

Go to

www.yourschoollottery.co.uk

Search for: St Mary's New Mills



GambleAware